

The **Ecocaminho** is the conversion of an old railway line into a space for walking and cycling. The route displays different contrasts between tree types and urban landscape.

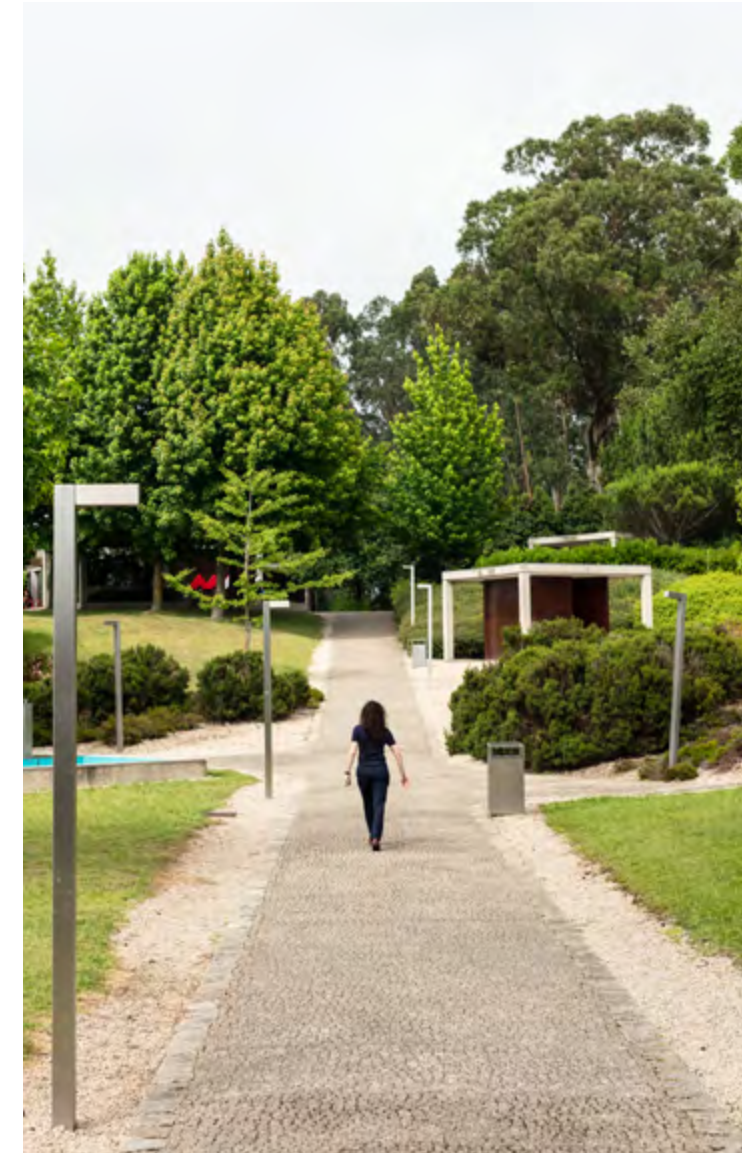
**Quinta da Gruta Environmental Education Complex** consists of a romantic mansion and gardens from the early 20<sup>th</sup> century. During the intervention of João Álvaro Rocha, a laboratory building was added, where projects related to the environment were developed, and an auditorium.



## Discover a territory for the family.

The **Urban Park of Moutidos** is one of the most visited parks in Maia, due to the conditions it offers. Created by João Álvaro Rocha, it bridges the urban and the rural.

Families find in Maia a house with a great quality of life. A “Family Municipality” where green and leisure parks allow everyone to have more contact with nature. Ecocaminho is also a way of leaving home, discovering the territory and promoting a healthier lifestyle. There are 35 spaces where green is the predominant color. A visit to the greener side of the territory.



MAIA

Sorrir para a Vida.

**Maia Welcome Center**  
Parque Central da Maia, 1º Piso, Loja 19  
4470-214 Maia, Portugal  
+351 229 444 732

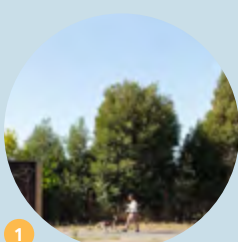
visitmaia.pt

visit  
maia

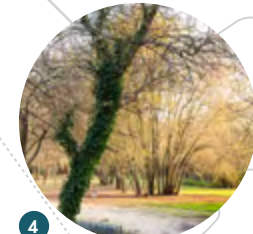
parks, leisure  
and environment



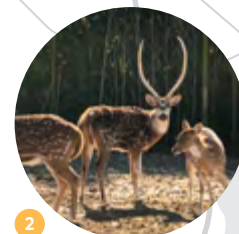




**1** The **Ecocaminho** runs part of the railway line connecting to Guimarães. It is 3.3 km where families find playgrounds for the little ones. The route can be done on foot or by bike.



**4** **Ponte de Moreira Park** develops on the banks of the river Leça. In addition to a pedestrian path, there is native vegetation such as Sessile Oak, Cork Oak, Strawberry tree or Holly.



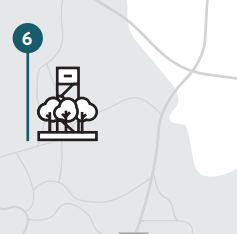
**2** The **Maia Zoological Park** is in the center of the county. It has over 500 animals from 100 different species. A place to teach young people respect for nature.



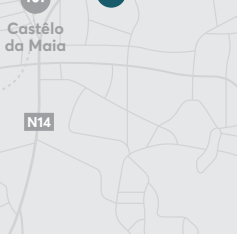
**3** **Parque Central da Maia** is a multifunctional place where families find various services, perfect for their free time. Its central location allows access from any point of Maia.



**5** **Quinta da Gruta** offers the possibility of finding, in a single place, the playful, experimentation and leisure aspect. During the bathing season, the Gruta Pool complements the offer for all.



**6** In **Avioso Park**, in Castelo da Maia, you can be in touch with nature and walk paths between meadows and lawns. It is the largest park in the city and has capacity to park 500 cars.



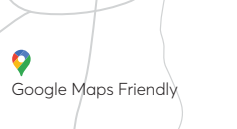
**5** **Maia Welcome Center** is a central hub for visitors, offering information and services.



**7** **Urban Park of Amores** offers various equipment for sports. The playground and the road network also provide more moments of leisure in nature.

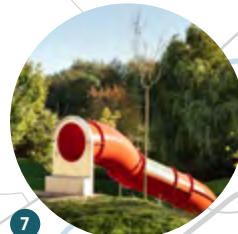


**8** **Urban Park of Maninhos** is in the parish Cidade da Maia. Inside, families can find riparian native species and various equipment for the leisure of the younger.



**9** **Moutidos Urban Park** is located in the parish of Águas Santas and offers 4 hectares of contact with nature. Here families find several lawned areas and a privileged view of Maia.

..... Ecocaminho  
 Walking route  
 Automobile route



**7** **Urban Park of Maninhos** is in the parish Cidade da Maia. Inside, families can find riparian native species and various equipment for the leisure of the younger.



**8** **Urban Park of Amores** offers various equipment for sports. The playground and the road network also provide more moments of leisure in nature.



**9** **Moutidos Urban Park** is located in the parish of Águas Santas and offers 4 hectares of contact with nature. Here families find several lawned areas and a privileged view of Maia.